

Te Māra

Keri 3C

Bedrooms	3
Bathrooms	2
Carpark	1
Land area	78-104m2*
Floor area	101m2**

Fridge	FR
Pantry	P
Dishwasher	DW
Washer dryer	WD
Storage	S
Hot water cylinder	HW
Clothesline	CL
Lawn	L

*Indicative, refer to scheme plan
**More or less

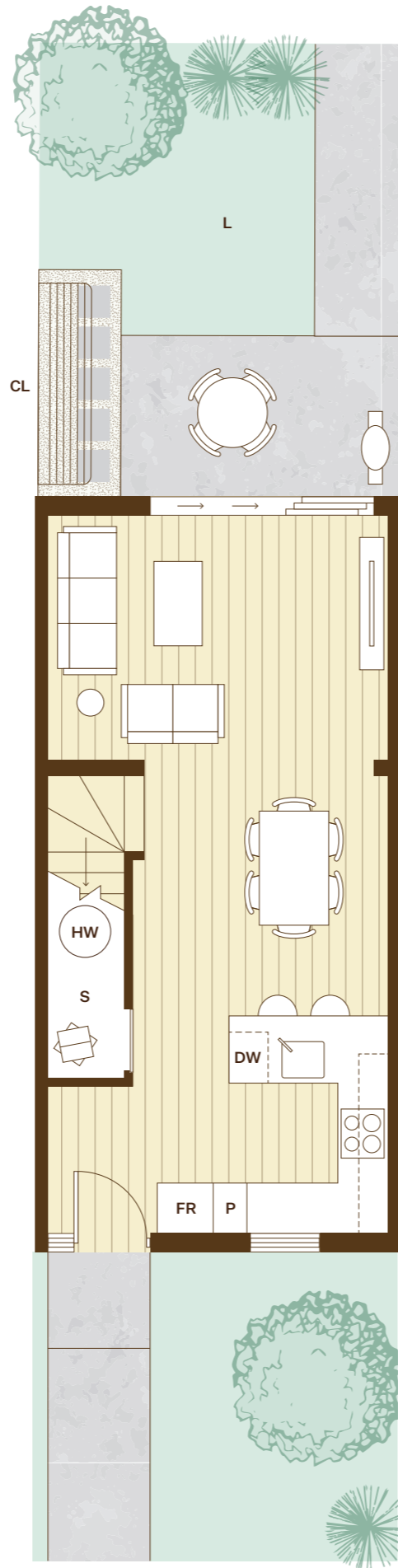


N ↑

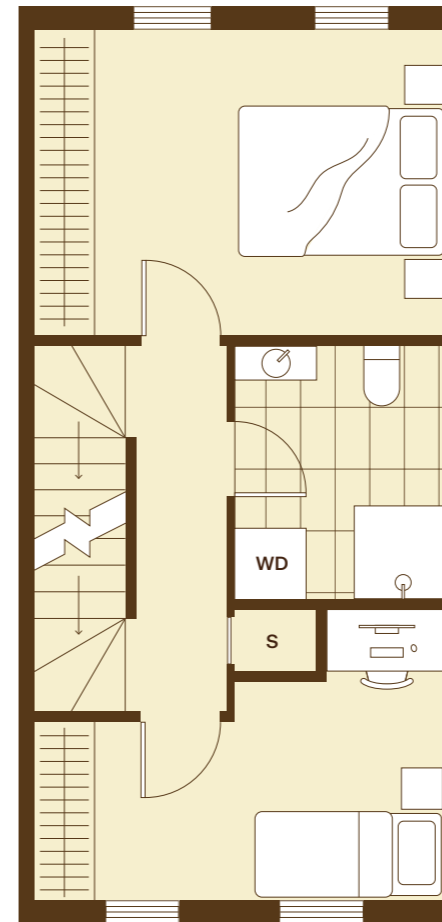
Lot numbers 2, 3, 4, 5, 6, 7, 8, 9, 12

All Te Māra homes come with full whiteware package (fridge/freezer, wash/dryer, dishwasher, cooktop and rangehood), heatpump in living area, fencing and landscaping. Furniture is indicative only.

Home orientation, landscape plan and site sizes differ between lots. Please refer to the masterplan to better determine the layout, size and landscaping of your home.

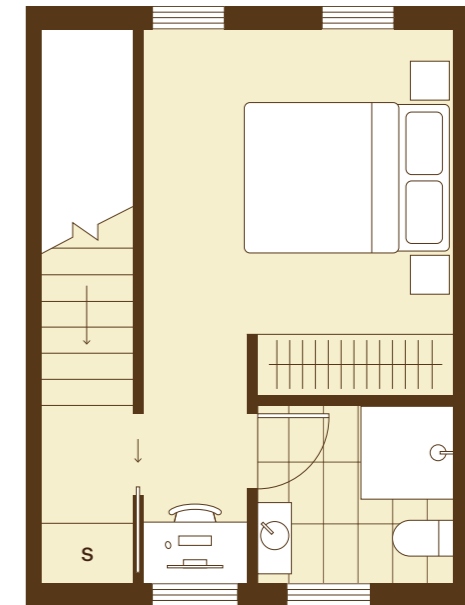


Ground Level





Level 1

Scale 1:75 1m 5m



Level 2

AVANT  **Te Ākitai Waiohau Investment Trust** 

Disclaimer: The plans and specifications are in draft form and are not final construction drawings. They are subject to variations as may be required by the relevant local authority or as may be reasonably required by the vendor to give effect to the vendors scheme of development.

Colliers
Licensed REAA 2008