

Te Māra

Keri 4D

Bedrooms	4
Bathrooms	2.5
Carpark	1
Land area	126m2*
Floor area	94m2**

Fridge	FR
Pantry	P
Dishwasher	DW
Washer dryer	WD
Storage	S
Clothesline	CL
Lawn	L

*Indicative, refer to scheme plan

**More or less

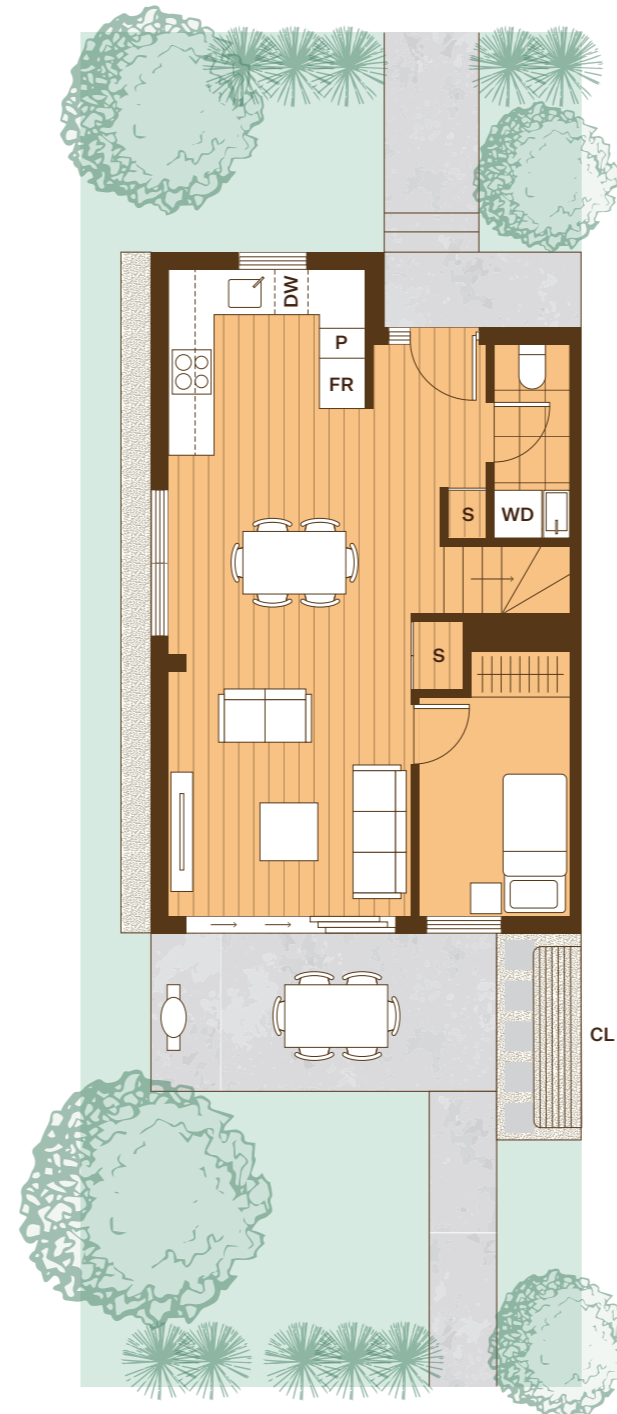


N ↑

Lot numbers 29

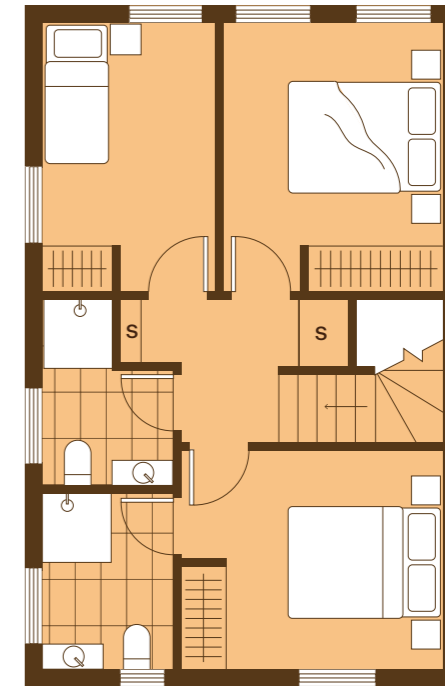
All Te Māra homes come with full whiteware package (fridge/freezer, wash/dryer, dishwasher, cooktop and rangehood), heatpump in living area, fencing and landscaping. Furniture is indicative only.

Home orientation, landscape plan and site sizes differ between lots. Please refer to the masterplan to better determine the layout, size and landscaping of your home.





Ground Level

Scale 1:75 1m 5m



Level 1

AVANT  Te Ākitai Waiohau Investment Trust 

Disclaimer: The plans and specifications are in draft form and are not final construction drawings. They are subject to variations as may be required by the relevant local authority or as may be reasonably required by the vendor to give effect to the vendors scheme of development.

 Licensed REAA 2008